

Fill your living space with warmth.

- › STORAGE HEATERS
- › NATURAL STONE HEATERS
- › FLOOR TEMPERING
- › BATHROOM RADIATORS
- › DIRECT HEATERS



STIEBEL ELTRON

Heating comfort easily arranged.

Electric heating systems still count as one of the most convenient ways to generate heat in residential buildings. Clean and efficient appliances enable a quick and convenient adjustment of the required ambience, at the point of use. More affordably, too, compared to conventional heating systems.



Contents.

| | | |
|------------------|--|----|
| Company | Quality doesn't happen by chance. It is a matter of design | 04 |
| Power management | Efficient heat generation with great precision | 08 |

Storage heaters

| | |
|-------------------|----|
| › Storage heaters | 12 |
|-------------------|----|

Convenient and comfortable heating

| | |
|-------------------------|----|
| › Natural stone heaters | 20 |
| › Floor tempering | 21 |
| › Bathroom radiators | 22 |

Direct heaters

| | |
|------------------|----|
| › Direct heaters | 26 |
|------------------|----|

Specification

| | |
|--|----|
| › The most important information at a glance | 32 |
|--|----|

Quality doesn't happen by chance. It is a matter of design.

From as early as 1924, the STIEBEL ELTRON brand has been associated with innovative solutions. Then and now, we continue to develop products with well-proven functions that are of the highest quality standard. These products combine innovative technology, reliable quality, and service for branded products with trusted partners of the best tradition. Our unconventional thinking and practical inventions have left their mark on entire market sectors. This intellectual dynamism is the most important capital our company possesses. It enables us to create products and systems of perfect quality for a demanding market.

For this, STIEBEL ELTRON
develops products and solu-
tions with the highest pos-
sible efficiency, that puts
comfort and convenience
right into your home.

Dedicated to continuity.

The same enthusiasm that led us to develop our present product range, drives us on to seek sustainable solutions for the future. When it comes to hot water, renewables and central heating, STIEBEL ELTRON has convenient and efficient solutions for today, and tomorrow too. Numerous individual components and complex system solutions contribute to protecting the environment and scarce resources without any sacrifice of comfort.

Today more than ever, heat generated by electricity represents exceptional efficiency and universal applicability. For example, practically 100 percent of the power generated by wind can be converted into available heat, completely without emissions. For this, STIEBEL ELTRON develops products and solutions with the highest possible efficiency, that puts comfort and convenience right into your home. Whether you are looking at an underfloor or an area heating system, an advanced cylinder heating system or a direct heating system – STIEBEL ELTRON ensures perfect convenience and comfort in any part of your home. At the same time we meet the highest demands for quality, design and environmental compatibility. Our aim is to offer our customers the very best solution for their individual situation. To this end, we work hand in hand with a strong network of qualified system partners who deliver a highly personal service, wherever you are. Although technical options have changed fundamentally since 1924, we have remained faithful to our aims, so you will always feel comfortable with your decision in favour of the high grade products and solutions from STIEBEL ELTRON.

The first feel-good factor concerns the selection of a suitable heat source. Maximum versatility and efficiency speak for electricity. It meets the most stringent environmental criteria too, if it is generated from sustainable sources. We apply the same benchmark to our products. As a result, our end-product is referred to as „feel-good“ - in every respect.

Feel-good means ...

Dr. Theodor Stiebel set out in 1924 to develop products that would consume the least amount of energy. All electric room heaters made by STIEBEL ELTRON meet that aim every day through high efficiency and technical innovations.



...growing sustainably from the roots of a company.

The creativity of our employees is the most important asset our company possesses. We research and develop solutions for tomorrow's world with passion, because the world belongs to those who actively help to shape it.



...preparing the ground to encourage creativity.

Eco power is environmentally responsible and highly efficient. That is why you don't have to shy away from using it to increase your personal comfort and convenience. Particularly in connection with the excellent room heaters from STIEBEL ELTRON. Electricity, some of which is now generated with renewables, plays an ever more prominent part in our modern energy mix.



...building on ideas that take care of your finances as well.

Temperatures, not just at the right level, but
Temperatures that give you the feeling of
that adjust to your mood. At a cost that won't
STIEBEL ELTRON turns heat into feel-good comfort.



ut also at the right time.
being at home. Temperatures
't spoil your feel-good factor.
omfort.



Electricity is the cleanest form of local heat generation. Full stop. CO₂-neutral power based on renewables, and potential savings through intelligent power management, offer many advantages.

There will always be electricity, the universally preferred source of energy. Only its generation is constantly being modernised.

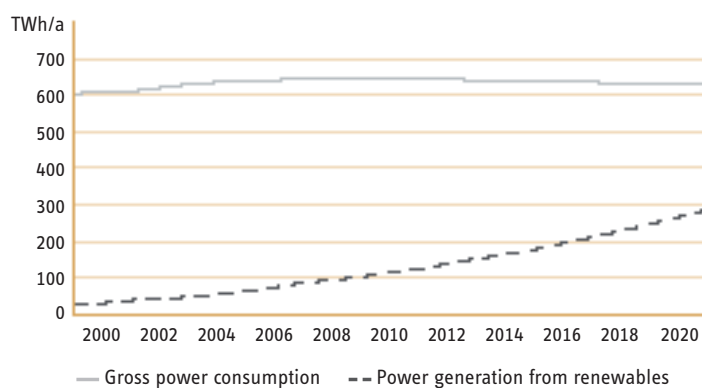
Surprisingly strong currents.

Heating convenience is a good thing, but it is not necessary everywhere. Considering that you only spend a limited amount of time in the bathroom in the morning and evening, it may seem a little extravagant to provide gentle warmth there all day long. Unfortunately, some central heating systems only permit a limited dosing of heat where time and space are concerned.

This is where electrical heating systems come into their own. A high degree of installation flexibility and spontaneous heat delivery ensure a feel-good factor that hits the spot, every time. For this, the heat is generated where you need it, in other words no lengthy transportation via pipework from your cellar. Essentially, this offers two benefits. The first of which is when it comes to investment outlay, as electric heating systems require no pipework, radiators or chimneys; consequently investment outlay and installation costs are low. The second advantage is evident when it comes to running costs. Electric heating systems allow the use of cheaper economy tariffs. Furthermore, their operation is almost maintenance-free. Yet they are certainly a serious alternative, both as a full and as a supplementary heating system. It makes sense, particularly in modernisation projects, to replace existing night storage heaters for advanced, energy efficient storage heaters that utilise the latest control technology.



Development of power consumption and generation from renewables to 2020



Source: Sector forecast 2020 | As of: 1/2009

Electricity – a strong heat source.

Electricity represents a universally applicable source of energy. Increasingly it is being yielded from renewables. Compared to nuclear power, its proportion increases all the time. According to a study commissioned by the Federal Ministry for the Environment [Germany], it would be possible as early as by 2050 to cover all required energy from renewable sources. The spectrum of power generation spans from wind power via solar energy to biogas power stations and many other methods of yielding energy. Choosing electric heating is a decision which gives you exactly this kind of versatility. Today, you determine from which source electricity is to be generated.

Only the type of heating appliance remains to be decided. With an efficiency of almost 100 % and the use of modern equipment, these appliances offer the highest level of comfort and convenience. There will always be electricity, the universally preferred power source. Only its generation is constantly being modernised. This means that you benefit from the technological advances being made in electric heat generation without having to replace your heating system.

When it comes to efficiency, electric heating systems in no way trail behind conventional heating systems either. They offer plenty of scope for use, particularly when it comes to spontaneous availability, i. e. the possibility to heat exactly when and where required.



Storage heaters.
Clean heat over night.

“High convenience and comfort
with low installation effort:
A storage heater system brings
clean heat over night. At costs
that let you sleep soundly.”



No space too small for heating comfort.

Small but nice | The ETC series of storage heaters offer the highest heating convenience on the smallest footprint. The compact and extremely slimline design of these appliances make them an ideal choice for tight hallways and background heating in the living space. Heat is mainly transferred through pleasant radiation via the appliance surface and as convection heat.

The ETC-M manual offers itself as standard series for affordable heating comfort. Charging can be set up conveniently and manually via the highly effective integral capillary tube controller. The bimetal discharge controller regulates the heat transfer by convection according to demand. The ETC-M is available in four output stages.

The ETC-A automatik represents a convenient control system for charging. A high grade twin capillary charging controller not only captures the core temperature inside the appliance, but also the respective room temperature. Consequently, each ETC-A automatik will be charged individually in accordance with settings and demand according to the actual room temperature. The heat transfer can be fine adjusted via the bimetal discharge controller.

ETC-M

- › Four output stages from 0.85 kW–3.4 kW
- › Manual charging
- › Improved safety through temperature limiter
- › Maximum heat-up duration of 7 h

ETC-A

- › Three output stages from 1.7 kW–3.4 kW
- › Room temperature-dependent charging
- › Improved safety through temperature limiter
- › Maximum heat-up duration of 7 h

ETC-M

Benefits for your home

- › High proportion of pleasant radiant heat
- › Extremely slimline appliance specially designed for hallways and recesses
- › Totally silent heat delivery
- › Clear controls
- › Easy cleaning underneath the appliance



Highest heating output on the smallest footprint.

Powerful output | ETS storage heaters are designed for top performance in extremely small spaces. The high-grade thermosolid insulating technology provides considerable heat retention capability. It ensures that the heater gives off its heat when it is needed. A highly efficient storage core keeps the capacity needed for heating ready for use.

The integrated room temperature controller comes into play when the temperature drops below the required level. The fan then blows pleasant heat into the entire room – almost silently. Charging can take place manually or centrally using the charge controller. The ETS casing is made from painted sheet steel. Its compact dimensions save space and make it extremely easy to install and service.



The programming unit for the appliance is hidden behind a discrete cover.

ETS

- › Connected load from 2 to 7 kW (subject to model)
- › Heat retention capacity 48–59 %
- › Fluff filter in air intake duct
- › Universal electronic charge controller
- › Versatile accessories for individual installation

ETS 400

Benefits for your home

- › Long service life
- › Extremely quiet operation
- › Compact dimensions
- › Easily accessible controls



Needs little space. Creates a lot of comfort.

Reduced depth | The ETW storage heater is designed to fit unobtrusively against the wall. Thanks to its slimline design, it can also easily fit into shallow recesses below windows. In most cases, this model is wall mounted. A support panel for walls with reduced load-bearing capacity is available as an accessory. The room temperature controller RTZ-S UP converts the stored energy into pleasant room temperatures. Subject to the temperature differential, it governs the fan speed to ensure an even heat delivery. This is where users can also start the optional booster heater. An alternative controller and additional accessories round off this range.



The clear RTZ-S UP room temperature controller regulates the heat discharge.

ETW

- › Connected load from 1.2 to 4.8 kW (subject to device)
- › Heat retention capacity 36.5 – 53 %
- › Fluff filter in the air inlet channel
- › Universal electronic charge controller
- › Versatile accessories for individual installation

ETW 240

Benefits for your home

- › Wall mounting or floorstanding
- › Extremely slimline design
- › Long service life
- › Extremely quiet operation
- › Easily accessible controls



For low window sills and low power consumption.

Lots of room for large windows | The ETT series of storage heaters is particularly suited to installation below a low-level window sill. At a height of only 49 cm, they can even fit below low-level windows, leaving a clear view outside. The highly efficient thermosolid insulation technology enables this heating system to excel through its high thermal retention capacity. The storage blocks hold the required thermal capacity on standby for even the coldest outside temperatures.

Benefits for your home

- › Very low height
- › Long service life
- › Extremely quiet operation
- › Easily accessible controls

ETT electronic

- › Connected load 3.5 or 5.0 kW (subject to model)
- › Heat retention capacity 50–52 %
- › Fluff filter in the air inlet channel
- › Universal electronic charge controller
- › Versatile accessories for individual installation

ETT 350 electronic



This is how heat is served up in the kitchen – pleasantly and economically.

Kitchen aid I The ETK 300 storage heater finds a space, even in the tiniest kitchen. With its standard width of 45 cm and variable height adjustment, it matches the standard dimensions of modern kitchen units. The integral electronic control thermostat and quiet fan always deliver pleasant level of warmth.



The ETK 300 storage heater fits perfectly into the space of a kitchen unit.

ETK 300

- › Connected load 3 kW
- › Fits into the space of a standard kitchen unit
- › Optional floorstanding installation with a full casing

ETK 300

Benefits for your home

- › Long service life
- › Can be integrated into the space of a standard kitchen unit
- › Variable device height and plinth depth adjustment
- › Quiet operation



More room for heat.

Lots of heat on the smallest footprint | The storage heater ETH requires only a little space thanks to its compact dimensions. An ideal choice for living room, recesses or corners. Yet it makes its case with a high output and an extremely robust metal casing. The hidden controls are easily accessible at the front. The room temperature controller RTI-HH is integrated into the control panel of the ETH. This way, your ideal room temperature can be conveniently selected directly at the storage heater. The 1 kW booster heater that can be switched on as required is ideal for a quick heat-up during spring and autumn.



Out of sight: The hidden programming unit ETH 40/60.

ETH 40 | ETH 60

- › Connected load 4 or 6 kW (subject to device)
- › Clear and out-of-sight controls
- › High heat storage capacity

ETH 40

Benefits for your home

- › Long service life
- › Little space requirement
- › High output on the smallest of footprints
- › Quiet operation



Convenient and comfortable heating.
Heat if and when you need it.

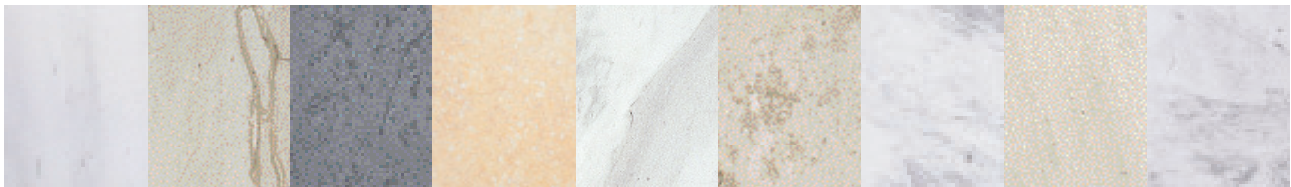
“I like it to be comfortable in my favourite spots. That’s where I want heat when it suits me, not all over the house. Otherwise my heating bills would go through the roof.”



Gentle radiated heat – beautiful design.

Heat source with positive radiation | Komfotherm natural stone heaters can be used as supplementary heaters and as full heating systems for a room or an entire house. The extraordinary aesthetics of the natural stone create a special atmosphere in both cases. The gentle radiated heat generates little air circulation in the room, therefore avoiding dust creation. This means that the room temperature can be about 2 °C lower than with air heating systems. Natural stone heating complies with the Directive 2002/91/EC of the European Parliament and of the Council of 16 December 2002 on the energy performance of buildings in combination with a ventilation system with heat recovery.

The wide selection of different designs enables the natural stone heaters to be integrated into any interior.



Komfotherm natural stone heater

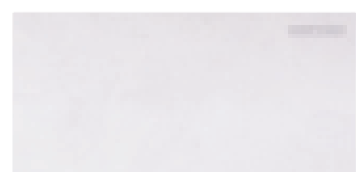
- › Wide output spectrum from 0.55 to 1.6 kW
- › Heating conductor inside a duct system milled into the back
- › Protection against over temperatures
- › Hoseproof in accordance with IP25

MHG 90 | Galaxis



Benefits for your home

- › Choice of nine designs
- › Can be installed landscape or portrait
- › Maintenance-free and free from wear and tear
- › Pleasant radiated heat



Warm floor in the bathroom. Easy to install, easy to use.

Warmth at your feet | The thermofloor underfloor tempering system responds practically at an instant to every temperature demand. It is particularly suitable as a secondary heating system in bathrooms. The pleasant heat underfoot is generated by a mat that is just 3 mm thick and laid directly underneath the floor covering. Its low build-height makes it an ideal choice for modernising older buildings.

Quick and easy to install | The FTT S twin and FTM S twin heating mats are suitable for any room layout. The self-adhesive mesh fabric makes installation easier because the mat will not slip when the final floor covering is put down. The mat can be adapted easily in rooms with odd angles. The FTB was designed specifically for installation in tiled shower areas.



The 7-day time switch facility of the RTF-Z2 enables any floor to be heated every day at different times so it is pleasantly warm when you want to be comfortable.

FTM S twin

- › Self-adhesive mesh fabric with sewn-on heat conductor
- › Heat conductor spacing 7.5 cm

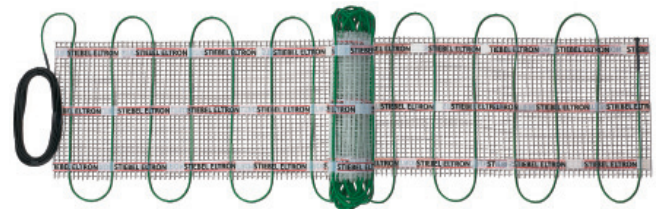
FTT S twin

- › Self-adhesive mesh fabric with sewn-on heat conductor
- › Heat conductor spacing 6 cm

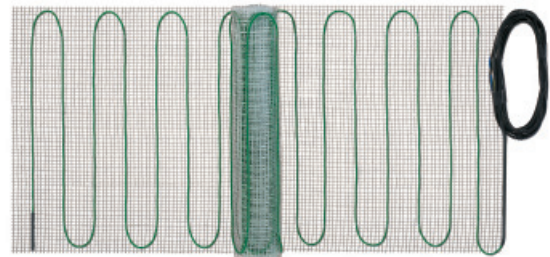
FTB

- › Heat conductor sewn onto a fabric mesh
- › Heat conductor spacing 4.5 cm
- › For installation in shower rooms with tiled floors

FTM S twin

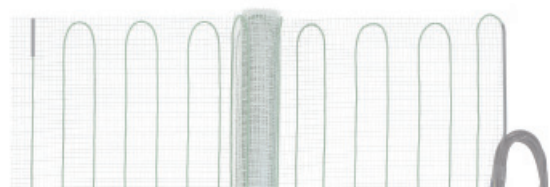


FTT S twin



Benefits for your home

- › Independent of the existing heating system
- › Suitable for new build, renovation and modernisation
- › Easy and quick to install
- › Variable adjustment of the required temperature
- › Pleasant floor temperature



The most elegant solution for greater heating comfort in your bathroom.

The luxury of warm towels | The elegant design of our bathroom/towel radiators improve the ambience of your bathroom. The rungs are excellent for pre-heating and drying towels and provide cosy warmth, whether you are in the shower or taking a bath. With its output of 750W, the radiator just needs to be connected to a supply. The electronic temperature controller then regulates the exact timing and level of heat using its various programs.



The quick-heat function lets you bring your bathroom to that comfortable temperature level you enjoy in minutes.

BHE 75 | BHE 75 L thermocon

- › Integral electronic temperature controller
- › Adjustable room temperature or four short-term programs
- › Output: 750 W
- › Splashproof to IP24

BHE 75



Benefits for your home

- › Practical: towel rail and drier in one
- › Easy to retrofit
- › Available in two designs

Raises your bathroom to your preferred temperature quickly and accurately.

Heating with two heat sources | The BHC 175 bathroom radiators are doubly well equipped for the rapid changes of temperature in a bathroom. Firstly, they can be directly heated electrically, because they are filled with heat transfer medium. Secondly, they can also be connected to the standard hot water heating system. Their 1,000 W quick-acting heater makes them a strong contender in the heating stakes. The combination of the radiator surface area and the quick-acting heater raise the bathroom rapidly to the required temperature. Even though it is connected to the central heating system, the integral direct heater rod can heat the radiator in summer, too. So, you never have to do without the comfort of dry, heated towels. In this case, the electronic temperature controller regulates the timing and degree of heat.

BHC 175 | BHC 175 L thermofan duo

- › Short-time timer $\frac{1}{4}$, $\frac{1}{2}$, 1 or 2 hours for rapid heater a direct heating element
- › Electrical output 750 W + 1,000 W
- › DHW output up to 585 W
- › Splashproof to IP24

Benefits for your home

- › Practical: towel rail and drier in one
- › Easy to retrofit
- › Can also be combined with a central heating system
- › Available in two designs
- › With integral rapid heater

BHC 175 L



Direct heaters. When you want to raise the temperature quickly.

“Whether in a bathroom, cellar or guest room – now and then you just want to raise the temperature level. And quickly too. For that, I can warmly recommend a direct heating system.”



Quick to respond when it's just a little too cool.

Controlled warmth | The CON S euro starts whenever individual areas of the apartment become too cool. The infinitely adjustable temperature pre-selection can be set to any temperature between 0 and +30 °C. The output provides entire rooms with reliable frost protection. The elegant metal casing contains a built-in high limit safety cut-out that protects the unit against overheating. The convectors can also be fitted with a towel holder for the bathroom. A 24-hour quartz timer in the CON ZS euro delivers the heat with precision timing.

CON S euro

- › Connected load 1.0/1.5/2.0/3.0 kW (subject to model)
- › Splashproof to IP24
- › CON ZS euro with 24-hour quartz timer

CON S euro



Benefits for your home

- › Constant, silent room air heating
- › Exclusive design
- › Accessories: chrome towel rail



Heating performance with precision.

A Multitalent | As single room heaters, the CNS SE and CNS UE combine the highest comfort with the best possible efficiency thanks to their advanced electronic control unit. A single switch enables four operating modes to be selected: frost protection, setback mode, comfort and a OFF mode (CNS UE) or 120 minute timer (CNS SE). With the timer function, the CNS SE operates for 120 minutes in comfort mode and then switches over automatically to the frost protection mode. The operating modes of the convector heater CNS UE can be selected directly on the appliance or, with the “Automatic” position, via a control line. This enables an easy integration into centrally regulated systems.

The different modes are signalled by an integral indicator. These extremely narrow appliances are robust and splashproof. A wall mounting bracket and preparation for permanent power connection ensure rapid and easy installation.



Works like a dream: the controller for the CNS SE underneath the discrete cover.

CNS SE

- › Indicator for heating mode, setback mode and frost protection
- › Cover flap for controls
- › Timer function for 2 h comfort temperature
- › Heating mode selector for frost protection, setback mode, comfort and timer
- › Power cable with mains plug

CNS UE

- › Indicator for heating mode, setback mode and frost protection
- › Cover flap for controls
- › Night setback may be controlled externally, e. g. via a time switch
- › Heating mode selector for frost protection, setback mode, comfort and automatic mode
- › With 1 m power cable for a permanent connection

CNS SE | CNS UE

Benefits for your home

- › High control accuracy through variable electronic temperature controller
- › Slimline design
- › Ideal as supplementary or booster heater



Output at its best.

Top performance | The CNS S and CNS U convectors discreetly provide great heating comfort on two fronts. Firstly, they have an extremely flat design, and secondly, they are very quiet and draught-free. These robust units are splashproofs and offer an infinitely variable temperature ranges from +5 to +30 °C.



Mechanical variable temperature controller with frost protection setting.

CNS S | CNS U

- › Connected load from 0.5 to 3 kW (subject to model)
- › Infinitely variable temperature control
- › Splashproof to IP24
- › With 1 m power cable for a permanent connection (CNS U)

CNS S

Benefits for your home

- › Slimline design
- › Ideal as supplementary heater



Heat wherever you need it.

Mobile heat delivery | The CNS F can be used as a freestanding or permanently installed appliance. That makes this convector heater ideal when heat is required quickly. The quick-fit castors, which enable use as a freestanding convector heater, are supplied with each appliance and ensure the required mobility. During operation the mechanical pendulum switch ensures the highest possible safety. This switch automatically turns the appliance off should it tip over or be accidentally pushed over. In addition, the integral temperature relay protects against overheating. These slimline convector heaters are robust and splashproof. A power connection via mains plug and a wall mounting bracket also enable an easy permanent installation.

CNS F

- › Operates as freestanding or as wall mounted convector heater
- › Feet with castors
- › Mechanical variable control thermostat with frost protection setting
- › ON/OFF switch
- › With 1.5 m long power cable and mains plug

CNS F

Benefits for your home

- › Highest safety during operation as freestanding convector heater through its integral pendulum switch
- › Castors for a high degree of flexibility
- › Ideal as supplementary heater



Just right! The direct heater for mobile use.

Comfort from a standing start | The CS 20 direct heater kick starts your heating provision. This mobile heater can be set up wherever it is required. It provides a variety of rooms with a reliable supply of heat using three different heater settings. The switchable fan in the CS 20 L also ensures that the heat is rapidly mixed with the air in the room. On hot days the fan can be used on its own to provide refreshing air circulation.

CS 20

- › Output 0.75/1.25/2 kW (switchable)
- › Freestanding unit with power cable and mains plug
- › CS 20 L with fan and cold air setting
- › Including wall mounting kit for fitting on a vertical wall

CS 20 L

Benefits for your home

- › Infinitely variable temperature control
- › Can be used wall mounted or floorstanding



Greatest heating effect – even in tight spaces.

Power packs | The rapid heaters are extremely effective and take up little room. With the CKR 20 S rapid heater, you have the choice of a powerful 2,000 W rapid heating option and a quiet 1,000 W background heating option.

Due to its compact design, the CBS 20 S can also unleash all of its power in confined spaces. The technology of both units is stylishly packed under a robust metal casing. These heaters are connected using a standard mains plug.

Benefits for your home

- › Extremely rapid heating of rooms
- › Little space requirement
- › Ideal for bathrooms
- › CK 20 S in an exclusive design

CK 20 S

- › Connected load 2.0 kW
- › Exclusive design
- › CKZ 20 S with 24-hour quartz timer
- › CKR 20 S with two heater and fan settings
- › CKT 20 S with 60 min. timer

CBS 20 S

- › Connected load 2.0 kW
- › Compact metal casing
- › Splashproof to IP24

CKZ 20 S



CBS 20 S



High level of detail: the specification. To ensure that rooms are brought to the right temperature.

Facts are your benchmarks for the selection of the right product. Particularly when you are looking for efficient heat provision. Each room should be tempered according to its use. After all, comfort means to have heat when and where you need it.





Storage heaters



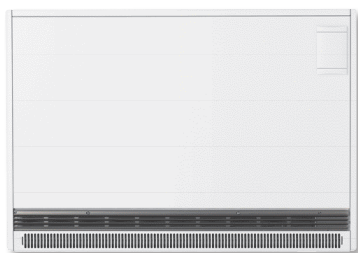
| MODEL | | ETC 085 M | ETC 170 M | ETC 250 M | ETC 340 M | ETC 170 A | ETC 250 A | ETC 340 A |
|-----------------------|-----|--------------------------------|--------------------------------|--------------------------------|--------------------------------|--------------------------------|--------------------------------|--------------------------------|
| | | 182059 | 182060 | 182061 | 182062 | 182063 | 182064 | 182065 |
| Connected load | W | 780 | 1560 | 2330 | 3110 | 1560 | 2330 | 3110 |
| Power supply | | 1/N/PE ~ 220-240 V 50/60 Hz | 1/N/PE ~ 220-240 V 50/60 Hz | 1/N/PE ~ 220-240 V 50/60 Hz | 1/N/PE ~ 220-240 V 50/60 Hz | 1/N/PE ~ 220-240 V 50/60 Hz | 1/N/PE ~ 220-240 V 50/60 Hz | 1/N/PE ~ 220-240 V 50/60 Hz |
| Rated heat-up | kWh | 6.8 | 13.6 | 20.4 | 27.2 | 13.6 | 20.4 | 27.52 |
| Height | mm | 700 | 700 | 700 | 700 | 700 | 700 | 700 |
| Width | mm | 355 | 585 | 815 | 1045 | 585 | 815 | 1045 |
| Depth | mm | 170 | 170 | 170 | 170 | 170 | 170 | 170 |
| Weight (incl. blocks) | kg | 43.5 | 81 | 119.5 | 158 | 81 | 119.5 | 158 |
| Colour | | pure white, RAL 9010 | pure white, RAL 9010 | pure white, RAL 9010 | pure white, RAL 9010 | pure white, RAL 9010 | pure white, RAL 9010 | pure white, RAL 9010 |



| MODEL | | ETS 200 | ETS 300 | ETS 400 | ETS 500 | ETS 600 | ETS 700 |
|-----------------------------------|-------|-------------------------|-------------------------|-------------------------|-------------------------|-------------------------|-------------------------|
| | | 074484 | 074485 | 074486 | 074487 | 074488 | 074489 |
| Connected load | W | 2000 | 3000 | 4000 | 5000 | 6000 | 7000 |
| Power supply | | 3/N/PE ~ 400 V 50 Hz | 3/N/PE ~ 400 V 50 Hz | 3/N/PE ~ 400 V 50 Hz | 3/N/PE ~ 400 V 50 Hz | 3/N/PE ~ 400 V 50 Hz | 3/N/PE ~ 400 V 50 Hz |
| Rated heat-up | kWh | 16 | 24 | 32 | 40 | 48 | 56 |
| Four-stage charge level reduction | | 100/90/80/70 | 100/90/80/70 | 100/90/80/70 | 100/90/80/70 | 100/90/80/70 | 100/90/80/70 |
| Heat retention capability | % | 48 | 53 | 55 | 56 | 58 | 59 |
| Operating noise | dB(A) | 30 | 32 | 33 | 34 | 34 | 34 |
| Height | mm | 650 | 650 | 650 | 650 | 650 | 650 |
| Width | mm | 605 | 780 | 955 | 1130 | 1305 | 1480 |
| Depth | mm | 275 | 275 | 275 | 275 | 275 | 275 |
| Weight (incl. blocks) | kg | 118 | 169 | 220 | 271 | 322 | 373 |
| Colour | | pure white, RAL 9010 | pure white, RAL 9010 | pure white, RAL 9010 | pure white, RAL 9010 | pure white, RAL 9010 | pure white, RAL 9010 |

Depth including wall spacer

Storage heaters



| MODEL | | ETW 120 | ETW 180 | ETW 240 | ETW 300 | ETW 360 | ETW 420 | ETW 480 |
|-----------------------------------|-------|-------------------------|-------------------------|-------------------------|-------------------------|-------------------------|-------------------------|-------------------------|
| | | 074391 | 074392 | 074393 | 074394 | 074395 | 074396 | 074397 |
| Connected load | W | 1200 | 1800 | 2400 | 3000 | 3600 | 4200 | 4800 |
| Power supply | | 3/N/PE ~ 400 V 50 Hz | 3/N/PE ~ 400 V 50 Hz | 3/N/PE ~ 400 V 50 Hz | 3/N/PE ~ 400 V 50 Hz | 3/N/PE ~ 400 V 50 Hz | 3/N/PE ~ 400 V 50 Hz | 3/N/PE ~ 400 V 50 Hz |
| Rated heat-up | kWh | 9.6 | 14.4 | 19.2 | 24 | 28.8 | 33.6 | 38.4 |
| Four-stage charge level reduction | | 100/90/80/70 | 100/90/80/70 | 100/90/80/70 | 100/90/80/70 | 100/90/80/70 | 100/90/80/70 | 100/90/80/70 |
| Heat retention capability | % | 36.5 | 38.5 | 42 | 50 | 52 | 53 | 53 |
| Operating noise | dB(A) | 29 | 28.5 | 31 | 33 | 32 | 32 | 32 |
| Height | mm | 546 | 546 | 546 | 546 | 546 | 546 | 546 |
| Width | mm | 578 | 739 | 900 | 1061 | 1222 | 1383 | 1544 |
| Depth | mm | 218 | 218 | 218 | 218 | 218 | 218 | 218 |
| Weight (incl. blocks) | kg | 73.5 | 106 | 137.5 | 169 | 201 | 232.5 | 264.5 |
| Colour | | pure white, RAL 9010 | pure white, RAL 9010 | pure white, RAL 9010 | pure white, RAL 9010 | pure white, RAL 9010 | pure white, RAL 9010 | pure white, RAL 9010 |

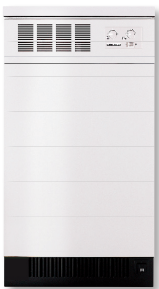
Depth including wall spacer



| MODEL | | ETT 350 | ETT 500 | ETA 150 |
|-----------------------------------|-------|----------------------|----------------------|----------------------|
| | | 074490 | 074491 | 074492 |
| Connected load | W | 3500 | 5000 | 1500 |
| Power supply | | 3/N/PE ~ 400 V 50 Hz | 3/N/PE ~ 400 V 50 Hz | 3/N/PE ~ 400 V 50 Hz |
| Rated heat-up | kWh | 28 | 40 | 12 |
| Four-stage charge level reduction | | 100/90/80/70 | 100/90/80/70 | 100/90/80/70 |
| Heat retention capability | % | 50 | 52 | 38.5 |
| Operating noise | dB(A) | 34 | 35 | |
| Width | mm | 1130 | 1480 | 739 |
| Depth | mm | 275 | 275 | 218 |
| Weight (incl. blocks) | kg | 197 | 270 | 106 |
| Colour | | pure white, RAL 9010 | pure white, RAL 9010 | pure white, RAL 9010 |

Depth including wall spacer

Storage heaters



| MODEL | | ETH 40 | ETH 60 | ETK 300 | Enclosure ETK 300* |
|---------------------------|-------|----------------------|----------------------|----------------------|--------------------|
| | | 223220 | 223221 | 148621 | 148629 |
| Connected load | W | 4000 | 6000 | 3000 | |
| Power supply | | 3/N/PE ~ 400 V 50 Hz | 3/N/PE ~ 400 V 50 Hz | 3/N/PE ~ 400 V 50 Hz | |
| Rated heat-up | kWh | 32 | 48 | 24 | |
| Heat retention capability | % | 49 | 49 | >40 | |
| Operating noise | dB(A) | 32 | 32 | 32 | |
| Height | mm | 800 | 1056 | 840 | 845-870 |
| Width | mm | 670 | 670 | 445 | 450 |
| Depth | mm | 350 | 350 | 570 | 600 |
| Weight (incl. blocks) | kg | 230 | 330 | 184 | |
| Colour | | pure white, RAL 9010 | pure white, RAL 9010 | white | white |

| SPECIAL ACCESSORIES | | Room temperature controller RTI-HH for ETH |
|---------------------|--|--|
| | | 223222 |
| Version | | Thermo-mechanical 2-point room temperature controller. May be fitted into the control fascia of the ETH. Breaking capacity 16 A/230 V. Setting range +7 °C to +30 °C. Switching differential approx. 2 K. The selector can be recessed. Backlit ON/OFF switch. |
| | | |
| | | Booster heater ETH |
| | | 223224 |
| Version | | Kit complete with ON/OFF switch, safety temperature limiter and fixing materials. Can be switched ON at core temperatures below approx. 150-200 °C. |
| | | |
| | | Booster heater ETK 300 |
| | | 189809 |
| Version | | Heater kit, complete with safety temperature limiter and fixing materials. |

*The kit comprises the worktop, the front panel and the side panels for a freestanding installation.

Special accessories

For ETW, ETS and ETT storage heaters



| MODEL | RTI-E3 182026 | RTI-EP2 182027 |
|---------|--|--|
| Version | Electronic 2-point room temperature controller for installation in the storage heater control panel. ON/OFF switch. Switching differential 1 K. Breaking capacity for booster heater 10 A, 230 V. Night setback approx. 4 K. Can also be used with decorative tiles. | Electronic proportional room temperature controller for installation in the storage heater control panel. ON/OFF switch. Control output 100 VA. Breaking capacity for booster heater 10 A, 230 V. Night setback approx. 4 K. Can also be used with decorative tiles. |



| MODEL | Booster heaters | | | | | | | | |
|----------------|----------------------|----------------------|----------------------|-----------------------------------|---------|---------|----------------------|---------|---------|
| | 182103 | 182104 | 182105 | 182106 | 182107 | 220900 | 182108 | 185276 | 182109 |
| For type | ETW 120 / ETS 200 | ETW 180 / ETS 300 | ETW 240 / ETS 400 | ETW 300 / ETS 500 / ETT 350 | ETW 360 | ETS 600 | ETS 700 / ETT 500 | ETW 420 | ETW 480 |
| Connected load | kW 0.35 | 0.50 | 0.80 | 1.0 | 1.2 | 1.2 | 1.5 | 1.5 | 1.7 |

Can be retrofitted for buffer cylinders from October 2005.



| MODEL | Vario mounting panel, support and cover | | | |
|---------------------|---|--|--|--|
| Type of accessories | Support | Vario mounting panel | | Cap |
| | 182101 | 182102 | 182028 | 171362 |
| For type | ETW, ETW Z, ETA 150 | ETW, ETW Z, ETA 150 | ETS, ETT | ETS, ETT, ETW, ETA 150 |
| Version | Set for floorstanding appliance installation (100 mm) for walls with limited load-bearing capacity. | Set for floorstanding appliance installation (100 mm), adjustable inclination. | Set for floorstanding appliance installation (100 mm), adjustable inclination. | Cover (plug) for charge controller or room thermostat. |

| MODEL | Heater Sets | | | | | | | |
|----------------|---|---------|---------|---------|---------|---------|---------|---------|
| | 182110 | 182111 | 182112 | 182113 | 182114 | 182115 | 182116 | 182117 |
| For type | ETS 200 | ETS 300 | ETS 400 | ETS 500 | ETS 600 | ETS 700 | ETT 350 | ETT 500 |
| Version | Heater sets for ETS and ETT storage heaters. For chargers t _f 5, 6, 7 h. The factory fitted heaters inside the ETS/ETT storage heaters must be replaced. | | | | | | | |
| Connected load | kW 2.7 | 4.1 | 5.5 | 6.5 | 8.1 | 9.0 | 4.9 | 6.5 |

Charge controllers

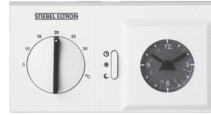


| MODEL | EAC 4 187900 | EAS 4 187901 | ZSE 4 187902 |
|------------------------------|---|--|---|
| Version | Reverse, spread and forward control. Digital microcomputer charge controller with weather-compensated sensor, control capacity 300 W. Extremely easy to adjust. - Select the correct time. - Select the charger model no. Can be used for all power supply conditions. | Forward control. Digital electronic charge controller with weather-compensated sensor, control capacity 300 W. LED indicator for Switching signal Z 1. ED 37/40, 68/70, 80 %, setback adjustable from 0 to 100 %. | Common controller, individually adjustable from -36 % to +12 %. Control capacity 300 W. LED indicator for control signal Z 1. Control signal conversion from 40 % to 80 % ED and optional selection from 80 % to 40 % ED. 35 % setback can be actuated. |
| Dimensions (H x W x D) mm | 90 x 107 x 55 | 90 x 53 x 55 | 90 x 53 x 55 |

ELTROMATIC® room temperature controllers



| MODEL | RTA-S UP 223344 | RTZ-S UP 223345 |
|------------------------------|--|--|
| Version | Room temperature controller with thermal feedback for unfinished walls, Setting range +5 °C to +30 °C, breaking capacity 10 (4) A, ~ 250 V, switching differential ±0.5 K, ON/OFF switch. Temperature setback of approx. 4 K via external switch/time switch. | Like RTA-S UP but with ON/OFF switch for booster heater. |
| Dimensions (H x W x D) mm | 80.5 x 80.5 x 43.5 | 80.5 x 80.5 x 43.5 |



| MODEL | RTA-S2 231061 | RTNZ-S2 231063 | RTU-S 073493 | RTP-S 073494 | RTPZ-S 073495 |
|------------------------------|---|---|---|--|--|
| Version | Room temperature controller for finished walls with thermal feedback, setting range +5 °C to +30 °C, breaking capacity 10 (4) A, ~ 250 V, switching differential ±0.5 K, ON/OFF switch. | Like RTA-S2, but with additional ON/OFF switch for booster heater and temperature setback of approx. 4 K via external switch/time switch. | Room temperature controller for finished walls with integral quartz time switch for automatic setback (adjustable 2-10 K). Breaking capacity 10 (2) A, ~ 250 V. | Proportional room temperature controller (finished walls) with ON/OFF switch that regulates the fan speed subject to the temperature differential. Control rating max. 180 VA. | Like RTP, but with additional switches for booster heater and temperature setback. |
| Dimensions (H x W x D) mm | 75 x 75 x 25.5 | 75 x 75 x 25.5 | 79 x 147 x 33 | 79 x 147 x 27 | 79 x 147 x 27 |

Natural stone heaters



| MODEL | MHG 55 | MHJ 55 | MHS 55 | MHD 55 | MHR 55 | SPH 55 | MHP 55 | MHV 55 | MHA 55 |
|----------------|-------------|-------------|-------------|-------------|-------------|-------------|-------------|-------------|-------------|
| | 074125 | 074128 | 074131 | 074134 | 074137 | 074140 | 182272 | 223348 | 182266 |
| Connected load | 0.55 | 0.55 | 0.55 | 0.55 | 0.55 | 0.55 | 0.55 | 0.55 | 0.55 |
| Power supply | 1/N ~ 230 V | 1/N ~ 230 V | 1/N ~ 230 V | 1/N ~ 230 V | 1/N ~ 230 V | 1/N ~ 230 V | 1/N ~ 230 V | 1/N ~ 230 V | 1/N ~ 230 V |
| Height | 500 | 500 | 500 | 500 | 500 | 500 | 500 | 500 | 500 |
| Width | 750 | 750 | 750 | 750 | 750 | 750 | 750 | 750 | 750 |
| Depth | 70 | 70 | 70 | 70 | 70 | 70 | 70 | 70 | 70 |
| Weight | 30 | 30 | 30 | 30 | 30 | 30 | 30 | 30 | 30 |
| IP rating | IP25 | IP25 | IP25 | IP25 | IP25 | IP25 | IP25 | IP25 | IP25 |

| MODEL | MHG 90 | MHJ 90 | MHS 90 | MHD 90 | MHR 90 | SPH 90 | MHP 90 | MHV 90 | MHA 90 |
|----------------|-------------|-------------|-------------|-------------|-------------|-------------|-------------|-------------|-------------|
| | 074126 | 074129 | 074132 | 074135 | 074138 | 074141 | 182273 | 223349 | 182267 |
| Connected load | 0.9 | 0.9 | 0.9 | 0.9 | 0.9 | 0.9 | 0.9 | 0.9 | 0.9 |
| Power supply | 1/N ~ 230 V | 1/N ~ 230 V | 1/N ~ 230 V | 1/N ~ 230 V | 1/N ~ 230 V | 1/N ~ 230 V | 1/N ~ 230 V | 1/N ~ 230 V | 1/N ~ 230 V |
| Height | 500 | 500 | 500 | 500 | 500 | 500 | 500 | 500 | 500 |
| Width | 1000 | 1000 | 1000 | 1000 | 1000 | 1000 | 1000 | 1000 | 1000 |
| Depth | 70 | 70 | 70 | 70 | 70 | 70 | 70 | 70 | 70 |
| Weight | 40 | 40 | 40 | 40 | 40 | 40 | 40 | 40 | 40 |
| IP rating | IP25 | IP25 | IP25 | IP25 | IP25 | IP25 | IP25 | IP25 | IP25 |

| MODEL | MHG 120 | MHJ 120 | MHS 120 | MHD 120 | MHR 120 | SPH 120 | MHP 120 | MHV 120 | MHA 120 |
|----------------|-------------|-------------|-------------|-------------|-------------|-------------|-------------|-------------|-------------|
| | 187772 | 187773 | 187774 | 187775 | 187776 | 187777 | 223347 | 223350 | 223353 |
| Connected load | 1.2 | 1.2 | 1.2 | 1.2 | 1.2 | 1.2 | 1.2 | 1.2 | 1.2 |
| Power supply | 1/N ~ 230 V | 1/N ~ 230 V | 1/N ~ 230 V | 1/N ~ 230 V | 1/N ~ 230 V | 1/N ~ 230 V | 1/N ~ 230 V | 1/N ~ 230 V | 1/N ~ 230 V |
| Height | 500 | 500 | 500 | 500 | 500 | 500 | 500 | 500 | 500 |
| Width | 1230 | 1230 | 1230 | 1230 | 1230 | 1230 | 1230 | 1230 | 1230 |
| Depth | 70 | 70 | 70 | 70 | 70 | 70 | 70 | 70 | 70 |
| Weight | 55 | 55 | 55 | 55 | 55 | 55 | 55 | 55 | 55 |
| IP rating | IP25 | IP25 | IP25 | IP25 | IP25 | IP25 | IP25 | IP25 | IP25 |

| MODEL | MHG 140 | MHJ 140 | MHS 140 | MHD 140 | MHR 140 | SPH 140 | MHP 140 | MHV 140 | MHA 140 |
|----------------|-------------|-------------|-------------|-------------|-------------|-------------|-------------|-------------|-------------|
| | 074127 | 074130 | 074133 | 074136 | 074139 | 074142 | 182274 | 223351 | 182268 |
| Connected load | 1.4 | 1.4 | 1.4 | 1.4 | 1.4 | 1.4 | 1.4 | 1.4 | 1.4 |
| Power supply | 1/N ~ 230 V | 1/N ~ 230 V | 1/N ~ 230 V | 1/N ~ 230 V | 1/N ~ 230 V | 1/N ~ 230 V | 1/N ~ 230 V | 1/N ~ 230 V | 1/N ~ 230 V |
| Height | 550 | 550 | 550 | 550 | 550 | 550 | 550 | 550 | 550 |
| Width | 1230 | 1230 | 1230 | 1230 | 1230 | 1230 | 1230 | 1230 | 1230 |
| Depth | 70 | 70 | 70 | 70 | 70 | 70 | 70 | 70 | 70 |
| Weight | 60 | 60 | 60 | 60 | 60 | 60 | 60 | 60 | 60 |
| IP rating | IP25 | IP25 | IP25 | IP25 | IP25 | IP25 | IP25 | IP25 | IP25 |

| MODEL | MHV 160 | MHA 160 |
|----------------|-------------|-------------|
| | 223352 | 223354 |
| Connected load | 1.6 | 1.6 |
| Power supply | 1/N ~ 230 V | 1/N ~ 230 V |
| Height | 600 | 600 |
| Width | 1350 | 1350 |
| Depth | 70 | 70 |
| Weight | 69 | 69 |
| IP rating | IP25 | IP25 |

| ACCESSORIES | Towel holder for MH/SP 600 mm 227668 |
|-------------|---|
|-------------|---|

Room thermostats

For natural stone heaters

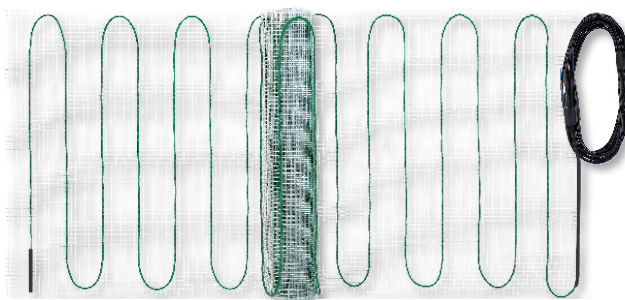


| MODEL | RTA-S UP 223344 | RTA 3600 UP 223343 |
|-----------------------|---|---|
| Version | UP room temperature controller with thermal feedback. Setting range +5 °C to +30 °C, breaking capacity 10 (4) A, ~ 250 V, switching differential ± 0.5 K, ON/OFF switch. Temperature setback of approx. 4 K via external switch/time switch. | UP room temperature controller with thermal feedback. Setting range +5 °C to +30 °C, breaking capacity 16 (4) A, ~ 250 V, switching differential ± 0.5 K. |
| Dimensions (HxWxD) | mm 80.5x80.5x43.5 | 80.5x80.5x43.5 |



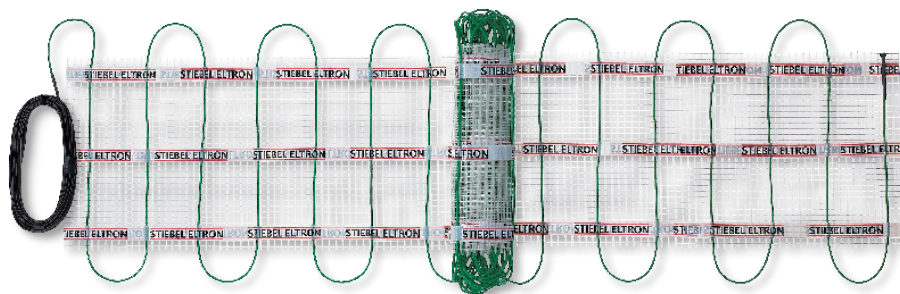
| MODEL | RTA-S2 231061 | RTA-3000 S2 231062 | RTU-S 073493 |
|-----------------------|---|---|---|
| Version | Room temperature controller for finished walls with thermal feedback. Setting range +5 °C to +30 °C, breaking capacity 10 (4) A, ~ 250 V, switching differential ± 0.5 K, ON/OFF switch. | Like RTA-S2, but without ON/OFF switch. Breaking capacity 3000 W, ~ 250 V. | Room temperature controller for finished walls with integral quartz time switch for automatic setback (adjustable 2 - 10 K). Setting range +5 °C to +30 °C, breaking capacity 10 (2) A, ~ 250 V. |
| Dimensions (HxWxD) | mm 75x75x25.5 | 75x75x25.5 | 79x147x33 |

Floor tempering

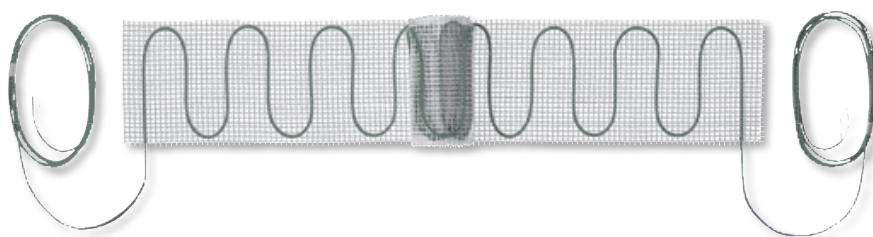


| MODEL | | FTT 150 S twin | FTT 225 S twin | FTT 300 S twin | FTT 375 S twin | FTT 450 S twin | FTT 600 S twin | FTT 750 S twin | FTT 900 S twin | FTT 1050 S twin |
|----------------|----------------|-------------------------|-------------------------|-------------------------|-------------------------|-------------------------|-------------------------|-------------------------|-------------------------|-------------------------|
| | | 220581 | 220582 | 220583 | 220584 | 220585 | 220586 | 220587 | 220588 | 220589 |
| Connected load | W | 150 | 225 | 300 | 375 | 450 | 600 | 750 | 900 | 1050 |
| Power supply | | 1/N/PE ~ 230 V 50 Hz | 1/N/PE ~ 230 V 50 Hz | 1/N/PE ~ 230 V 50 Hz | 1/N/PE ~ 230 V 50 Hz | 1/N/PE ~ 230 V 50 Hz | 1/N/PE ~ 230 V 50 Hz | 1/N/PE ~ 230 V 50 Hz | 1/N/PE ~ 230 V 50 Hz | 1/N/PE ~ 230 V 50 Hz |
| Length | mm | 2000 | 3000 | 4000 | 5000 | 6000 | 8000 | 10000 | 12000 | 14000 |
| Width | mm | 500 | 500 | 500 | 500 | 500 | 500 | 500 | 500 | 500 |
| Surface | m ² | 1 | 1.5 | 2 | 2.5 | 3 | 4 | 5 | 6 | 7 |

Floor tempering



| MODEL | | FTM 150 S twin | FTM 225 S twin | FTM 300 S twin | FTM 375 S twin | FTM 450 S twin | FTM 600 S twin | FTM 750 S twin | FTM 900 S twin | FTM 1050 S twin |
|----------------|----------------|-------------------------|-------------------------|-------------------------|-------------------------|-------------------------|-------------------------|-------------------------|-------------------------|-------------------------|
| | | 221400 | 221401 | 221402 | 221403 | 221404 | 221405 | 221406 | 221407 | 221408 |
| Connected load | W | 150 | 225 | 300 | 375 | 450 | 600 | 750 | 900 | 1050 |
| Power supply | | 1/N/PE ~ 230 V 50 Hz | 1/N/PE ~ 230 V 50 Hz | 1/N/PE ~ 230 V 50 Hz | 1/N/PE ~ 230 V 50 Hz | 1/N/PE ~ 230 V 50 Hz | 1/N/PE ~ 230 V 50 Hz | 1/N/PE ~ 230 V 50 Hz | 1/N/PE ~ 230 V 50 Hz | 1/N/PE ~ 230 V 50 Hz |
| Length | mm | 2000 | 3000 | 4000 | 5000 | 6000 | 8000 | 10000 | 12000 | 14000 |
| Width | mm | 500 | 500 | 500 | 500 | 500 | 500 | 500 | 500 | 500 |
| Surface | m ² | 1 | 1.5 | 2 | 2.5 | 3 | 4 | 5 | 6 | 7 |



| MODEL | | FTB 100 | FTB 140 | FTB 200 |
|----------------|----------------|----------------------|----------------------|----------------------|
| | | 223236 | 223237 | 223238 |
| Connected load | W | 100 | 140 | 200 |
| Power supply | | 1/N/PE ~ 230 V 50 Hz | 1/N/PE ~ 230 V 50 Hz | 1/N/PE ~ 230 V 50 Hz |
| Length | mm | 2500 | 3500 | 5000 |
| Width | mm | 200 | 200 | 200 |
| Surface | m ² | 0.5 | 0.7 | 1 |

Special accessories

For underfloor tempering



| MODEL | FT-C Set | FT-S Set | NHD 50 |
|---------------------|---|---|--|
| | 185605 | 185604 | 074199 |
| Type of accessories | Floor temperature controller with digit. 7-day time switch and installation materials. | Floor temperature controller and installation materials. | Hold-down dowel. |
| Version | Comfort set with electronic floor temperature controller with digital 7-day time switch RTF-Z2; 3.0 m of flexible conduit for floor temperature sensor with sensor sleeve; 90° sensor conduit bend; 2.0 m of conduit for positor; 90° positor bend; 2 pce. cavity wall boxes (Ø = 55 mm). | Standard set with RTF electronic floor temperature controller with replaceable frame; 3.0 m of flexible conduit for floor temperature sensor with sensor sleeve; 90° sensor conduit bend; 2.0 m of conduit for positor; 90° positor bend; 2 pce. cavity wall boxes (Ø = 55 mm). | 50 pce. hold-down dowels 6x25 mm for anchoring the heating mats. Each individual heating zone can be prevented from slipping in this way. The dowels are inserted through the mat at the corners and hammered into the drilled hole in the screed. Tightening the heating mat also makes it easier to apply the tile adhesive or levelling material. |

Floor temperature controllers

For underfloor tempering



| MODEL | RTF-Z2 | RTF | RTF-AP 2 |
|--------------------|---|--|---|
| | 231065 | 185547 | 223346 |
| Version | Electronic floor temperature controller with digital 7-day time switch and replaceable frame. The controller can be mounted as a stand-alone device or can be integrated into the underfloor switching programs of different manufacturers. Large LCD. Programming via 4 keys with user prompts. Program switching times, temperatures and day allocations can be adjusted individually. Automatic heat-up time calculation. ON/OFF function. Party function for bypassing the timer program setting. For mounting a switch box (Ø = 55 mm). External sensor 2 kΩ with 4 m of sensor lead. Setting range +10 °C to +42 °C. Operating voltage 230 V, 50 Hz. Breaking capacity 16 (2) A, ~ 250 V. Switching differential approx. 1.5 K. Appliance depth on finished walls = 16 mm. Colour pure white, RAL 9010. | Electronic floor temperature controller with replaceable frame. For installation in under-floor switching programs of different manufacturers. LED for heating and setback. Temperature range restriction in rotary selector. External sensor 2 kΩ with 4 m of sensor lead. Setting range +10 °C to +40 °C. Operating voltage 230 V, 50 Hz. Breaking capacity 16 (2) A, ~ 250 V. Switching differential approx. 1 K. ON/OFF switch. Fixed temperature setback of 5 K. For installing in a plaster box (Ø = 55 mm); appliance depth above plaster = 16 mm. Colour pure white, RAL 9010. | Electronic floor temperature controller for wall mounting. Setting range +10 °C to +40 °C. ON/OFF switch. Breaking capacity 16 (4) A, ~ 250 V. Switching differential 1 K. Operating voltage 230 V, 50 Hz. Incl. 4 m of sensor lead. Colour pure white, RAL 9010. |
| Dimensions (HxWxD) | mm 85x81.5x45 | 85x81.5x44.5 | 75x75x25.5 |

Bathroom radiators



| MODEL | | BHE 75 220590 | BHE 75 L 220591 |
|----------------|----|----------------------------|----------------------------|
| Power supply | | 1/N ~ 230 V 50 Hz | 1/N ~ 230 V 50 Hz |
| Connected load | kW | 0.75 | 0.75 |
| Height | mm | 1225 | 1436 |
| Width | mm | 550 | 550 |
| Depth | mm | 85 | 137 |
| Weight | kg | 17.5 | 27.5 |
| IP rating | | IP24 | IP24 |
| Colour | | commercial white, RAL 9016 | commercial white, RAL 9016 |



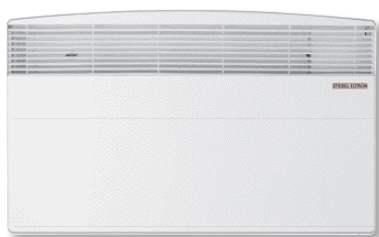
| MODEL | | BHC 175 220592 | BHC 175 L 220593 |
|--------------------------------|----|----------------------------|----------------------------|
| Heating flow/return connection | | G 1/2 | G 1/2 |
| Output V/R-T (70/55 ~ 22 °C) | W | 435 | 585 |
| Output V/R-T (50/40 ~ 22 °C) | W | 230 | 325 |
| Power supply | | 1/N ~ 230 V 50 Hz | 1/N ~ 230 V 50 Hz |
| Connected load | kW | 1.75 | 1.75 |
| Output, direct heater rod | kW | 0.75 | 0.75 |
| Output, rapid heater | kW | 1.0 | 1.0 |
| Height | mm | 1239 | 1467 |
| Width | mm | 550 | 550 |
| Depth | mm | 130 | 152 |
| Weight | kg | 19 | 29.5 |
| IP rating | | IP24 | IP24 |
| Colour | | commercial white, RAL 9016 | commercial white, RAL 9016 |

Direct heaters



| MODEL | | CON 10 S | CON 15 S | CON 20 S | CON 30 S | CON 10 ZS | CON 15 ZS | CON 20 ZS | CON 30 ZS |
|----------------|----|-------------------|-------------------|-------------------|-------------------|-------------------|-------------------|-------------------|-------------------|
| | | 071815 | 071816 | 071817 | 071818 | 071819 | 071820 | 071821 | 071822 |
| Connected load | kW | 1.0 | 1.5 | 2.0 | 3.0 | 1.0 | 1.5 | 2.0 | 3.0 |
| Setting range | °C | 0-30 | 0-30 | 0-30 | 0-30 | 0-30 | 0-30 | 0-30 | 0-30 |
| Power supply | | 1/N/PE ~ 230 V | 1/N/PE ~ 230 V | 1/N/PE ~ 230 V | 1/N/PE ~ 230 V | 1/N/PE ~ 230 V | 1/N/PE ~ 230 V | 1/N/PE ~ 230 V | 1/N/PE ~ 230 V |
| Version | | | | | | 24-hour timer | 24-hour timer | 24-hour timer | 24-hour timer |
| Height | mm | 460 | 460 | 460 | 460 | 460 | 460 | 460 | 460 |
| Width | mm | 430 | 585 | 740 | 1050 | 430 | 585 | 740 | 1050 |
| Depth | mm | 123 | 123 | 123 | 123 | 123 | 123 | 123 | 123 |
| Weight | kg | 4.8 | 6.5 | 8.3 | 11.3 | 4.8 | 6.5 | 8.3 | 11.3 |
| IP rating | | IP24 | IP24 | IP24 | IP24 | IP24 | IP24 | IP24 | IP24 |
| Colour | | alpine white | alpine white | alpine white | alpine white | alpine white | alpine white | alpine white | alpine white |

| MODEL | | Special accessories, towel rail | | | | | | | |
|--------------------|--|---------------------------------|--|-------------|--|-------------|--|--|--|
| | | 072464 | | 072465 | | 072466 | | | |
| For appliance type | | CON 15 S/ZS | | CON 20 S/ZS | | CON 30 S/ZS | | | |

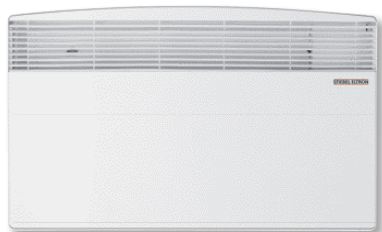


| MODEL | CNS 50 UE* | CNS 75 UE* | CNS 100 UE* | CNS 125 UE* | CNS 150 UE* | CNS 175 UE* | CNS 200 UE* | CNS 250 UE* | CNS 300 UE* |
|-------|------------|------------|-------------|-------------|-------------|-------------|-------------|-------------|-------------|
| | 229749* | 229750* | 229751* | 229752* | 229753* | 229754* | 229755* | 229756* | 229757* |

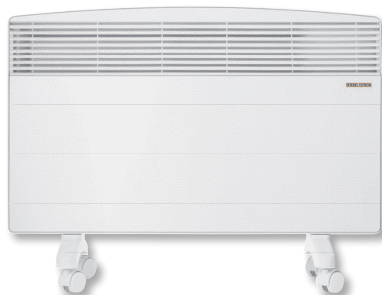
| MODEL | CNS 50 SE | CNS 75 SE | CNS 100 SE | CNS 125 SE | CNS 150 SE | CNS 175 SE | CNS 200 SE | CNS 250 SE | CNS 300 SE |
|----------------|-----------|--------------------|--------------------|--------------------|--------------------|--------------------|--------------------|----------------|----------------|
| | 229740 | 229741 | 229742 | 229743 | 229744 | 229745 | 229746 | 229747 | 229748 |
| Connected load | kW | 0.5 | 0.75 | 1.0 | 1.25 | 1.5 | 1.75 | 2.0 | 3.0 |
| Setting range | °C | 5-30 | 5-30 | 5-30 | 5-30 | 5-30 | 5-30 | 5-30 | 5-30 |
| Power supply | | 1/N ~ 220-240 V | 1/N ~ 220-240 V | 1/N ~ 220-240 V | 1/N ~ 220-240 V | 1/N ~ 220-240 V | 1/N ~ 220-240 V | 1/N ~ 230 V | 1/N ~ 230 V |
| Height | mm | 450 | 450 | 450 | 450 | 450 | 450 | 450 | 450 |
| Width | mm | 370 | 445 | 445 | 590 | 590 | 740 | 890 | 1040 |
| Depth | mm | 100 | 100 | 100 | 100 | 100 | 100 | 100 | 100 |
| Weight | kg | 3.8 | 4.4 | 4.4 | 5.7 | 5.7 | 6.8 | 8.1 | 9.4 |
| IP rating | | IP24 | IP24 | IP24 | IP24 | IP24 | IP24 | IP24 | IP24 |
| Colour | | alpine white | alpine white | alpine white | alpine white | alpine white | alpine white | alpine white | alpine white |

* Without mains plug

Direct heaters



| MODEL | | CNS 50 U* | CNS 75 U* | CNS 100 U* | CNS 125 U* | CNS 150 U* | CNS 175 U* | CNS 200 U* | CNS 250 U* | CNS 300 U* |
|----------------|----|--------------|--------------|--------------|--------------|--------------|--------------|--------------|--------------|--------------|
| | | 220725* | 220726* | 220727* | 220728* | 220729* | 220730* | 220731* | 220732* | 220733* |
| MODEL | | CNS 50 S | CNS 75 S | CNS 100 S | CNS 125 S | CNS 150 S | CNS 175 S | CNS 200 S | CNS 250 S | CNS 300 S |
| | | 220716 | 220717 | 220718 | 220719 | 220720 | 220721 | 220722 | 220723 | 220724 |
| Connected load | kW | 0.5 | 0.75 | 1.0 | 1.25 | 1.5 | 1.75 | 2.0 | 2.5 | 3.0 |
| Setting range | °C | 6-30 | 6-30 | 6-30 | 6-30 | 6-30 | 6-30 | 6-30 | 6-30 | 6-30 |
| Power supply | | 1/N | 1/N | 1/N | 1/N | 1/N | 1/N | 1/N | 1/N | 1/N |
| | | ~ 220-240 V | ~ 220-240 V | ~ 220-240 V | ~ 220-240 V | ~ 220-240 V | ~ 220-240 V | ~ 220-240 V | ~ 230 V | ~ 230 V |
| Height | mm | 450 | 450 | 450 | 450 | 450 | 450 | 450 | 450 | 450 |
| Width | mm | 370 | 445 | 445 | 590 | 590 | 740 | 740 | 890 | 1040 |
| Depth | mm | 100 | 100 | 100 | 100 | 100 | 100 | 100 | 100 | 100 |
| Weight | kg | 3.8 | 4.4 | 4.4 | 5.7 | 5.7 | 6.8 | 6.8 | 8.1 | 9.4 |
| IP rating | | IP24 | IP24 | IP24 | IP24 | IP24 | IP24 | IP24 | IP24 | IP24 |
| Colour | | alpine white | alpine white | alpine white | alpine white | alpine white | alpine white | alpine white | alpine white | alpine white |



| MODEL | | CNS 75 F | CNS 100 F | CNS 125 F | CNS 150 F | CNS 175 F | CNS 200 F | CNS 250 F |
|----------------|----|-----------------|-----------------|-----------------|-----------------|-----------------|-----------------|--------------|
| | | 229789 | 229790 | 229791 | 229792 | 229793 | 229794 | 229795 |
| Connected load | kW | 0.75 | 1.0 | 1.25 | 1.5 | 1.75 | 2.0 | 2.5 |
| Setting range | °C | 6-30 | 6-30 | 6-30 | 6-30 | 6-30 | 6-30 | 6-30 |
| Power supply | | 1/N ~ 220-240 V | 1/N ~ 220-240 V | 1/N ~ 220-240 V | 1/N ~ 220-240 V | 1/N ~ 220-240 V | 1/N ~ 220-240 V | 1/N ~ 230 V |
| Height | mm | 450 | 450 | 450 | 450 | 450 | 450 | 450 |
| Width | mm | 445 | 445 | 590 | 590 | 740 | 740 | 890 |
| Depth | mm | 100 | 100 | 100 | 100 | 100 | 100 | 100 |
| Weight | kg | 4.9 | 4.9 | 6.2 | 6.2 | 7.3 | 7.3 | 8.6 |
| IP rating | | IP24 | IP24 | IP24 | IP24 | IP24 | IP24 | IP24 |
| Colour | | alpine white | alpine white | alpine white | alpine white | alpine white | alpine white | alpine white |

* Without mains plug

Direct heaters

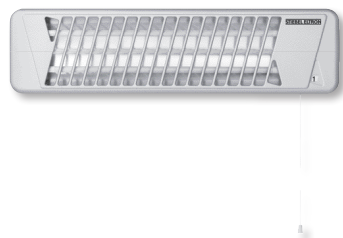


| MODEL | | CS 20 074376 | CS 20 L 074377 |
|----------------|----|----------------------|----------------------|
| Connected load | W | 2000 | 2000 |
| Phases | | 1/N | 1/N |
| Rated voltage | V | 230 | 230 |
| Frequency | Hz | 50 | 50 |
| Output stages | kW | 0.75/1.25/2.0 | 0.75/1.25/2.0 |
| Setting range | °C | 5-30 | 5-30 |
| Height | mm | 390 | 390 |
| Width | mm | 600 | 710 |
| Depth | mm | 100 | 100 |
| Weight | kg | 4.8 | 6 |
| IP rating | | IP20 | IP20 |
| Colour | | pure white, RAL 9010 | pure white, RAL 9010 |



| MODEL | | CK 20 S 071793 | CKZ 20 S 071795 | CKR 20 S 072633 | CKT 20 S 230344 | CBS 20 S 185274 |
|-------------------------------|----|-------------------|--------------------|--------------------|--------------------|----------------------|
| Connected load | W | 2000 | 2000 | 2000 | 2000 | 2000 |
| Phases | | 1/N/PE | 1/N/PE | 1/N/PE | 1/N/PE | 1/N |
| Rated voltage | V | 230 | 230 | 230 | 230 | 230 |
| Frequency | Hz | 50 | 50 | 50 | 50 | 50 |
| Setting range | °C | 5-30 | 5-30 | 5-30 | 5-30 | 5-35 |
| Output stages | kW | - | - | 1.0/2.0 | - | - |
| Heating duration preselection | | - | 24-hour timer | - | 60-min timer | - |
| Height | mm | 460 | 460 | 460 | 460 | 400 |
| Width | mm | 335 | 335 | 335 | 335 | 275 |
| Depth | mm | 123 | 123 | 123 | 123 | 95 |
| Weight | kg | 4.4 | 4.4 | 4.4 | 4.4 | 3 |
| IP rating | | IP13 B | IP13 B | IP13 B | IP13 B | IP24 |
| Colour | | alpine white | alpine white | alpine white | alpine white | pure white, RAL 9010 |

Direct heaters



| MODEL | | IW 120 | IW 180 | CFK 5 |
|----------------|----|----------------------|----------------------|-------------|
| | | 229339 | 229340 | 073685 |
| Connected load | W | 1200 | 1800 | 500 |
| Power supply | | 1/N/PE ~ 230 V 50 Hz | 1/N/PE ~ 230 V 50 Hz | 1/N ~ 230 V |
| Output stages | kW | 0.4/0.8/1.2 | 0.6/1.2/1.8 | |
| Height | mm | 145 | 145 | 387 |
| Width | mm | 535 | 535 | 170 |
| Depth | mm | 85 | 85 | 110 |
| Weight | kg | 1.55 | 1.55 | 1.2 |
| IP rating | | IPX4 | IPX4 | IP20 |
| Colour | | silver | silver | white |
| Setting range | °C | | | 6-45 |

Legal notice | Although we have tried to make this brochure as accurate as possible, we are not liable for any inaccuracies in its content. Information concerning equipment levels and specification are subject to modification. The equipment characteristics described in this brochure are non-binding regarding the specification of the final product. Due to our policy of ongoing improvement, some features may have subsequently been changed or even removed. Please consult your local dealer for information about the very latest equipment features. The images in this brochure are only examples. The illustrations also contain installation components, accessories and special equipment, which is not part of the standard delivery. Reprinting of all or part of this brochure only with the publisher's express permission.

STIEBEL ELTRON INTERNATIONAL GMBH | DR.-STIEBEL-STRASSE | 37603 HOLZMINDEN
TEL +49 5531 7020 | FAX +49 5531 702479 | E-MAIL INFO@STIEBEL-ELTRON.COM | WWW.STIEBEL-ELTRON.COM

STIEBEL ELTRON